

Chapter 25 The Solar System

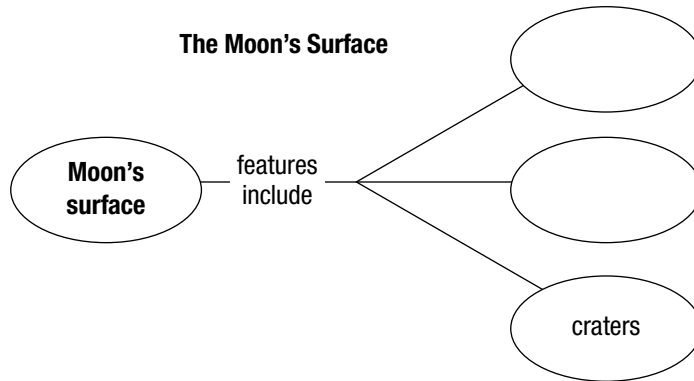
Section 25.2 The Earth-Moon System

(pages 796–801)

This section describes Earth’s moon, how it was formed, and its phases. It also explains solar and lunar eclipses and tides on Earth.

Reading Strategy (page 796)

Building Vocabulary As you read, complete the concept map with terms from this section. Make similar concept maps for eclipses and tides. For more information on this Reading Strategy, see the **Reading and Study Skills** in the **Skills and Reference Handbook** at the end of your textbook.



1. What is the force of gravity on the moon’s surface compared to the force of gravity on Earth’s surface? _____

Earth’s Moon (pages 796–797)

2. How does the moon’s lack of an atmosphere affect its temperatures? _____

3. Evidence of ice on the moon has been found near the moon’s _____.

Surface Features (page 797)

4. Circle the letter of each major surface feature of the moon.

a. highlands	b. maria
c. seas	d. craters

Match each lunar surface feature with its correct description.

	Description	Surface Feature
_____ 5.	A round depression caused by a meteoroid	a. maria b. crater
_____ 6.	Low, flat plains formed by ancient lava flows	c. highland
_____ 7.	A rough, mountainous region	

Chapter 25 The Solar System

Formation of the Moon (page 798)

8. Explain the leading hypothesis of how the moon formed. _____

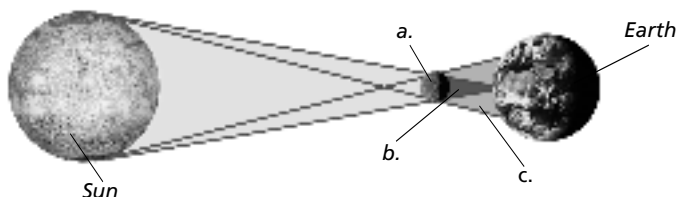
Phases of the Moon (pages 798–799)

9. Circle the letter of each sentence that is true about phases of the moon.
- a. The moon’s phases change according to an irregular cycle.
 - b. Phases are the different shapes of the moon visible from Earth.
 - c. Phases are caused by changes in the relative positions of the moon, sun, and Earth as the moon revolves around Earth.
 - d. The sunlit portion of the moon always faces Earth.
10. When does a full moon occur? _____

Eclipses (pages 799–800)

11. When the shadow of a planet or moon falls on another body in space, a(n) _____ occurs.

Solar Eclipse



12. Look at the diagram showing a solar eclipse and label the parts.
- a. _____ b. _____ c. _____
13. Circle the letter of each sentence that is true about a lunar eclipse.
- a. A lunar eclipse occurs when Earth casts a shadow on the moon.
 - b. A lunar eclipse occurs when the moon casts a shadow on a portion of Earth’s surface.
 - c. A lunar eclipse occurs during a full moon, when Earth is between the sun and moon.
 - d. A lunar eclipse occurs during a new moon, when the moon is between the sun and Earth.

Tides on Earth (page 801)

14. Describe the cause of tides. _____

15. Is the following sentence true or false? A spring tide is produced when the change between daily high and low tides is the greatest.
